

Adventures in

Avida-ED

Louise Mead and Cory Kohn

lsmead@msu.edu

kohncory@msu.edu

Try the ***new*** browser version (3.0 alpha):

bit.do/avida-ed

Materials we're using today:

bit.do/avida-ed-KBS

Curriculum materials or previous versions:

avida-ed.msu.edu

As originally presented by

Fred Hingst

DeWitt High School:
Biology, AP Biology & Zoology

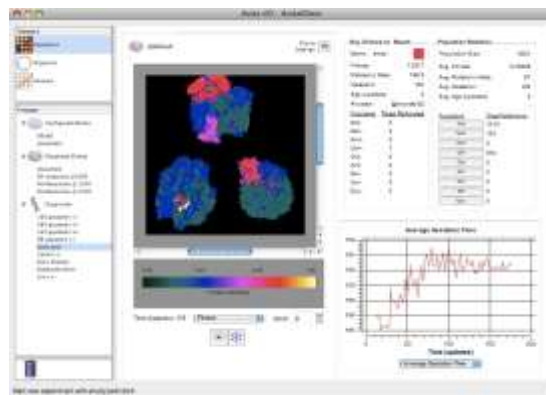
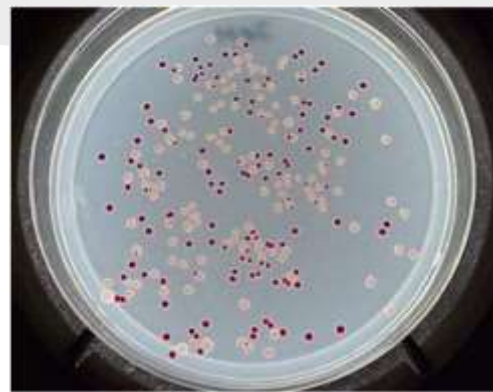


Rick Schultz

St. Johns High School
Biology, Chemistry



What we did this summer

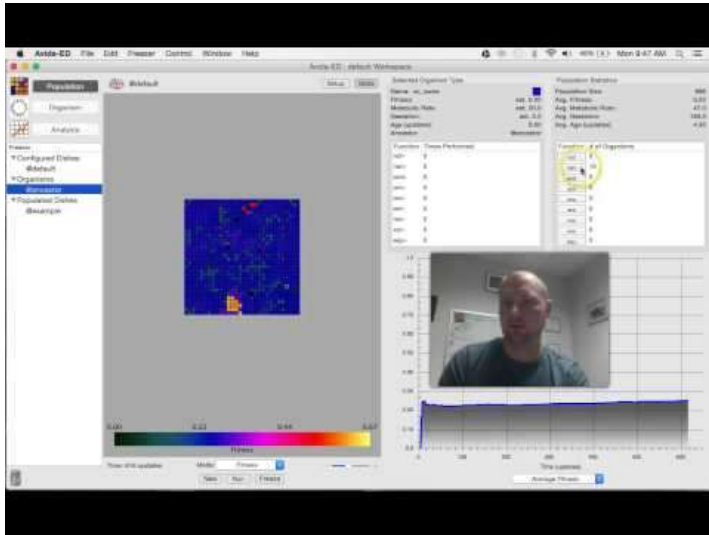


Today's Objectives

- ~~1. Download~~ Load Avida-ED on a web browser
2. Three Screens
 - a. Population
 - b. Organism
 - c. Analyser
3. Student Sample
4. Open Inquiry/Time to play

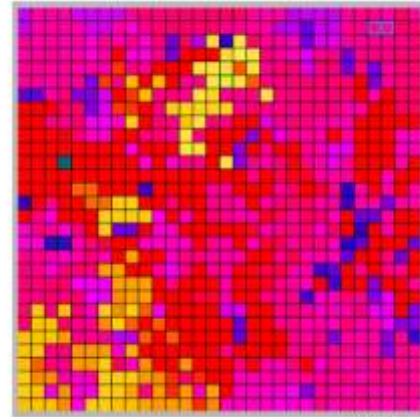
Ways We Learn

YouTube
Hingstology



User Manual
<https://goo.gl/iCzGdF>

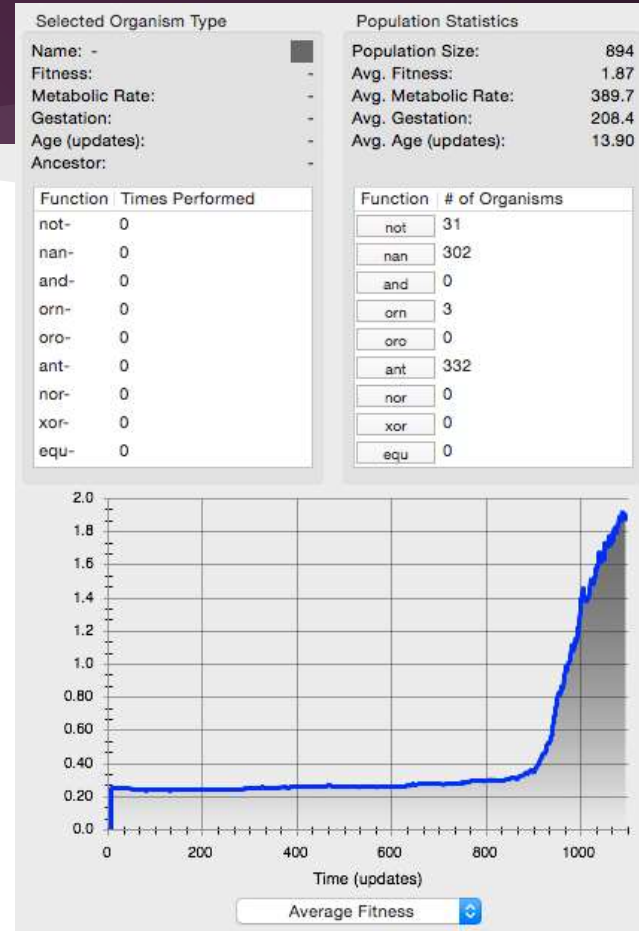
Avida-ED Lab Book
Evolution Education Version



Avidians

Science as a Process

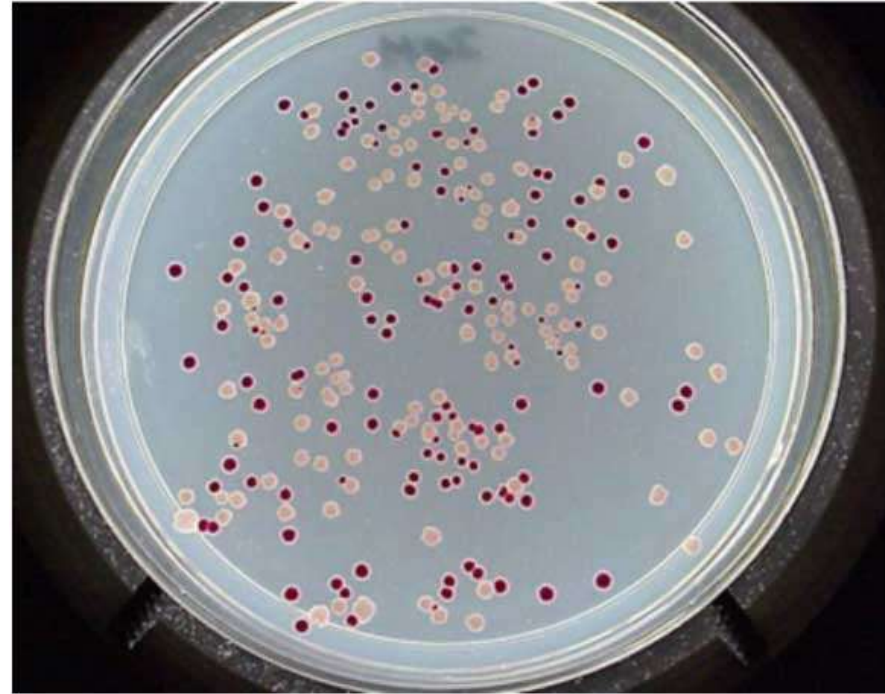
- Apply concepts of statistics and probability to support explanations that organisms with an advantageous heritable trait tend to increase in proportion to organisms lacking this trait.
- Scientific knowledge is based on the assumption that natural laws operate today as they did in the past and they will continue to do so in the future. (HS-LS4-1),(HS-LS4-4)



Exploring Mutations and Selection: Pre-adaptive or Post-Adaptive (p. 23)

- Each group will complete the exercise once.
- Use the manual to guide you through this process.
- Please enter data on the google sheet found at the address below.

<https://goo.gl/rUwU9H>



Exploring the Effects of Mutation Rate on Individuals (p. 31, 1st page of 2nd section)

- **Each group will produce 4 total offspring and save them in their freezer.**
- **Use the handout to guide you through this process.**
- **Please enter data on the google sheet found at the address below.**

<https://goo.gl/rUwU9H>

Pale Grass Blue Butterfly



Join Us: 2nd Annual Active LENS Workshop

June 9-11, 2016

- Held at Michigan State University in East Lansing, MI
- Teams of two learn to use Avida-ED and how to best incorporate it into the courses they teach
- Trains instructors so participants can both implement classroom interventions and train other educators
- Travel and expenses related to the workshop will be covered
- Visit avida-ed.msu.edu and apply ASAP

