

# W. K. Kellogg Biological Station K-12 Partnership

## What we do

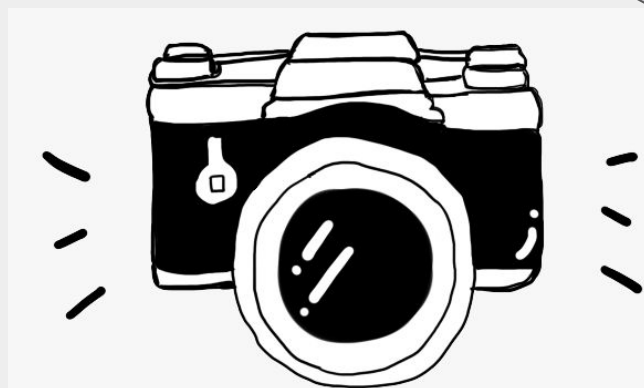
- Host professional learning, science education workshops and book studies
- Support and recruit Research Experiences for Teachers
- Disseminate lesson plans and session recordings (archived and available online)
- Mentor graduate students as Science Education and Outreach Fellows

## Our mission

The KBS K-12 Partnership supports teachers and scientists in **creating meaningful ways for K-12 students to engage with and explore** current research at Kellogg Biological Station to improve **science education opportunities** in Michigan schools and informal education spaces and increase participant **scientific and environmental literacy.**

## Connect with Us!

Kara Haas  
K-12 Partnership Coordinator  
@KaraHaaSciEd  
[KaraHaas@msu.edu](mailto:KaraHaas@msu.edu)  
[k12partnership@kbs.msu.edu](mailto:k12partnership@kbs.msu.edu)  
<https://www.kbs.msu.edu/education/k-12/>

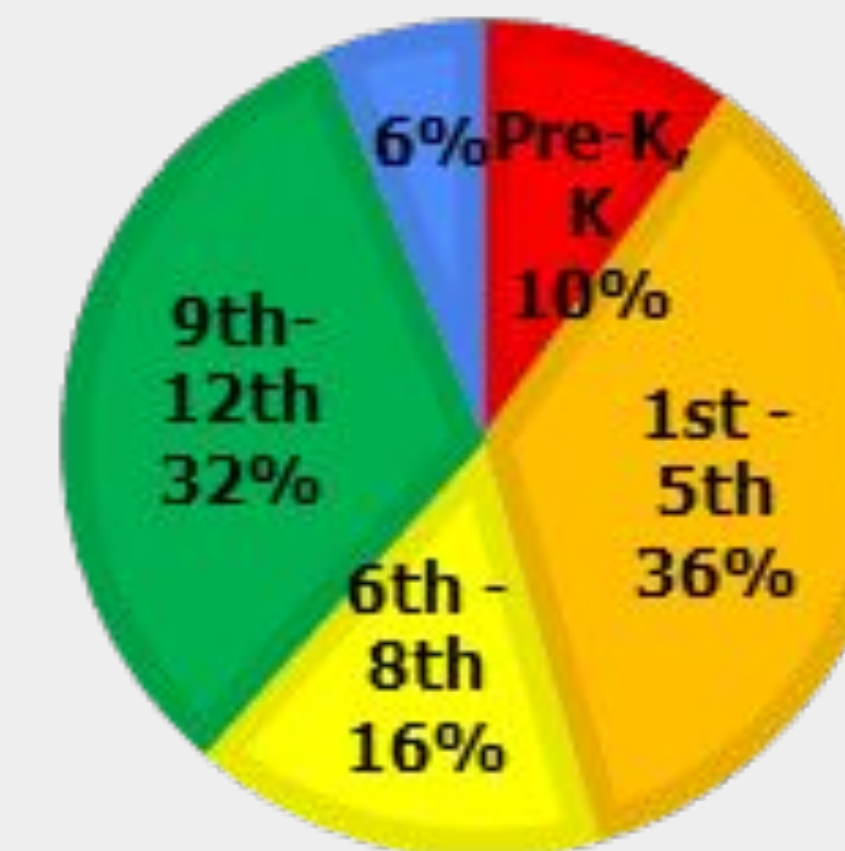


## 2022 Teacher Survey Results

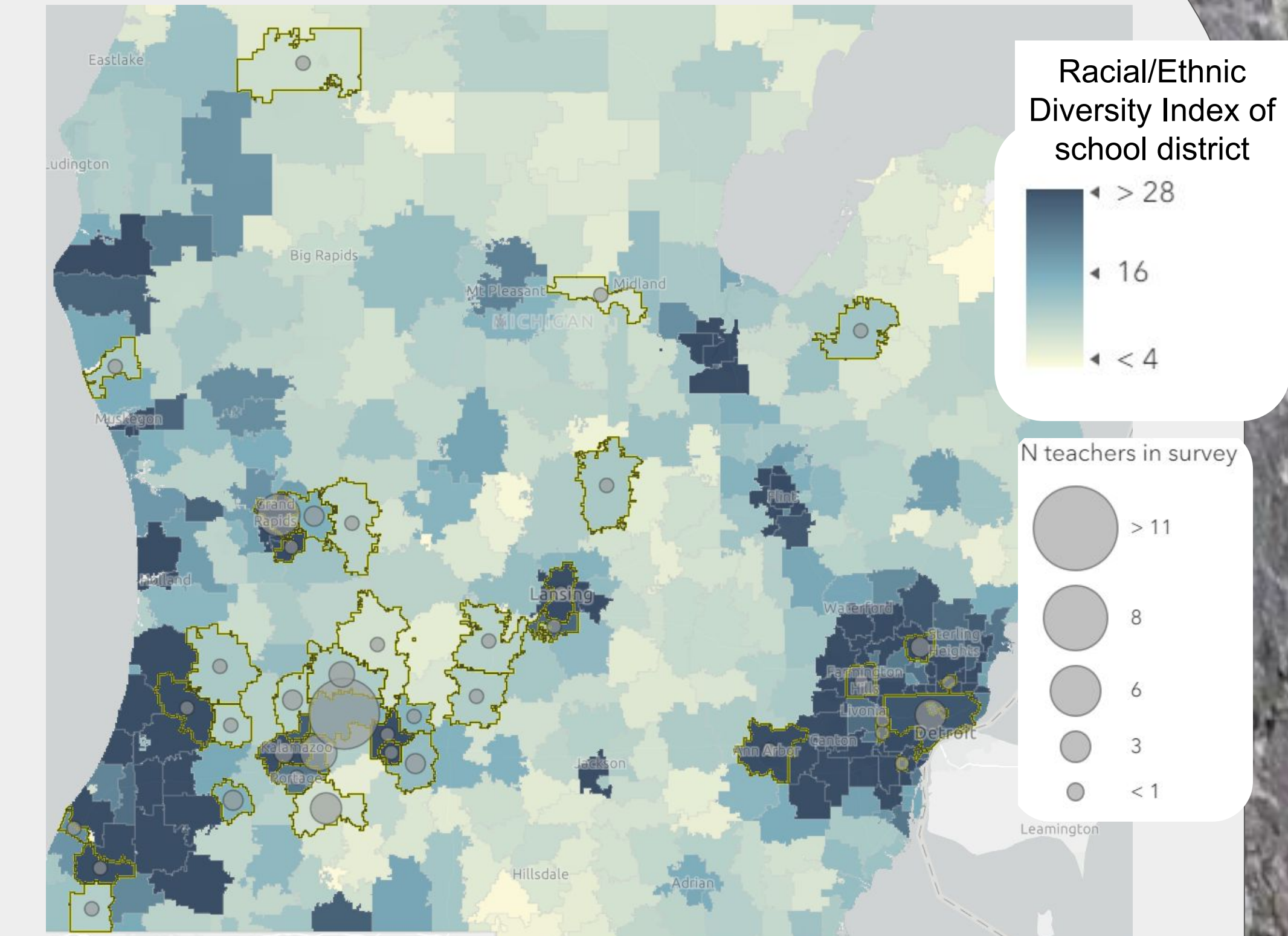
### Who are our participants?

#### 94 Responses

- 79% Woman/21% Men/1% Non-binary
- 87% White/4% Black or African American; 4% Asian; 2% Hispanic, Latino/a/x

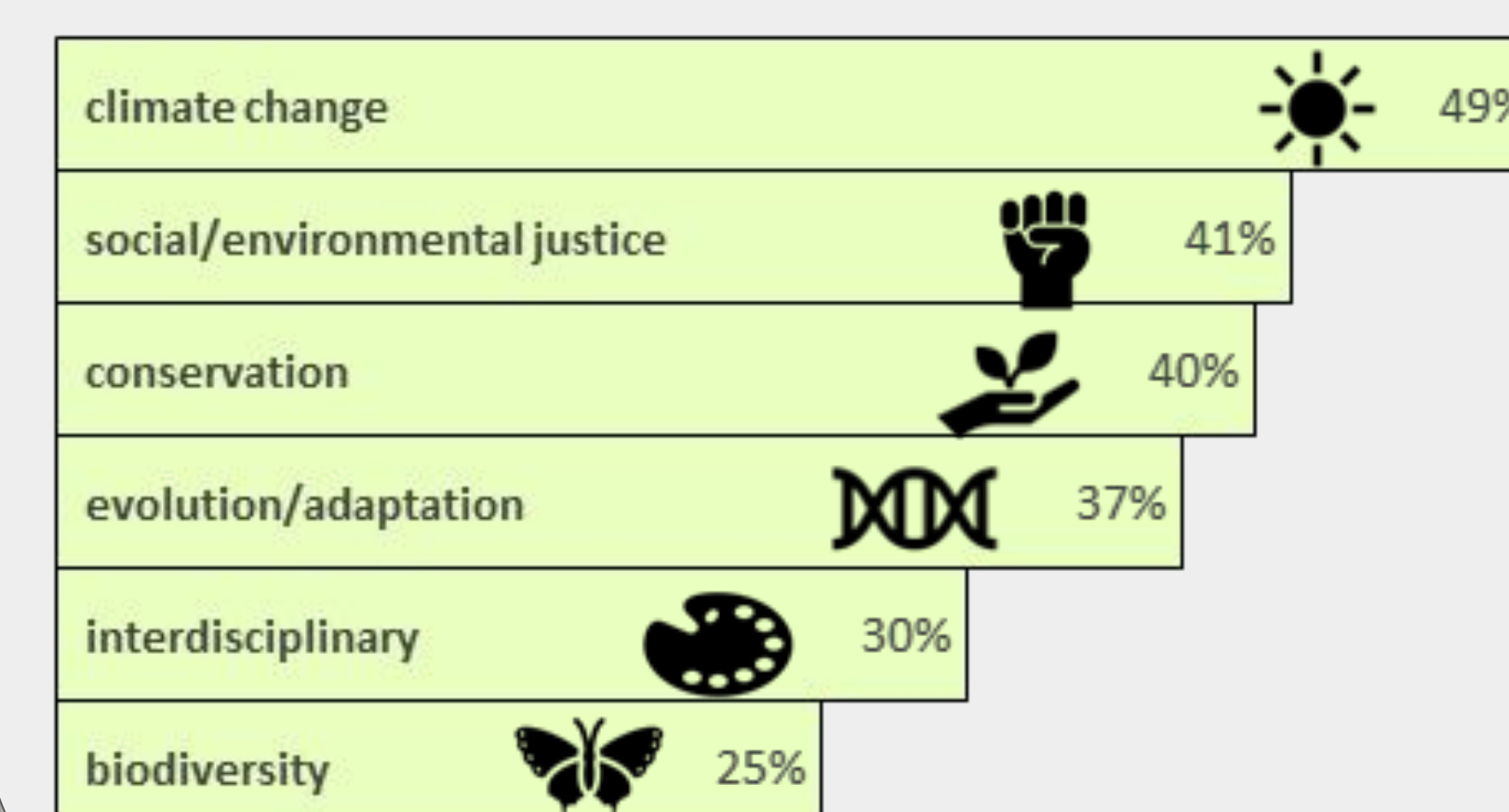


Grade Levels Taught

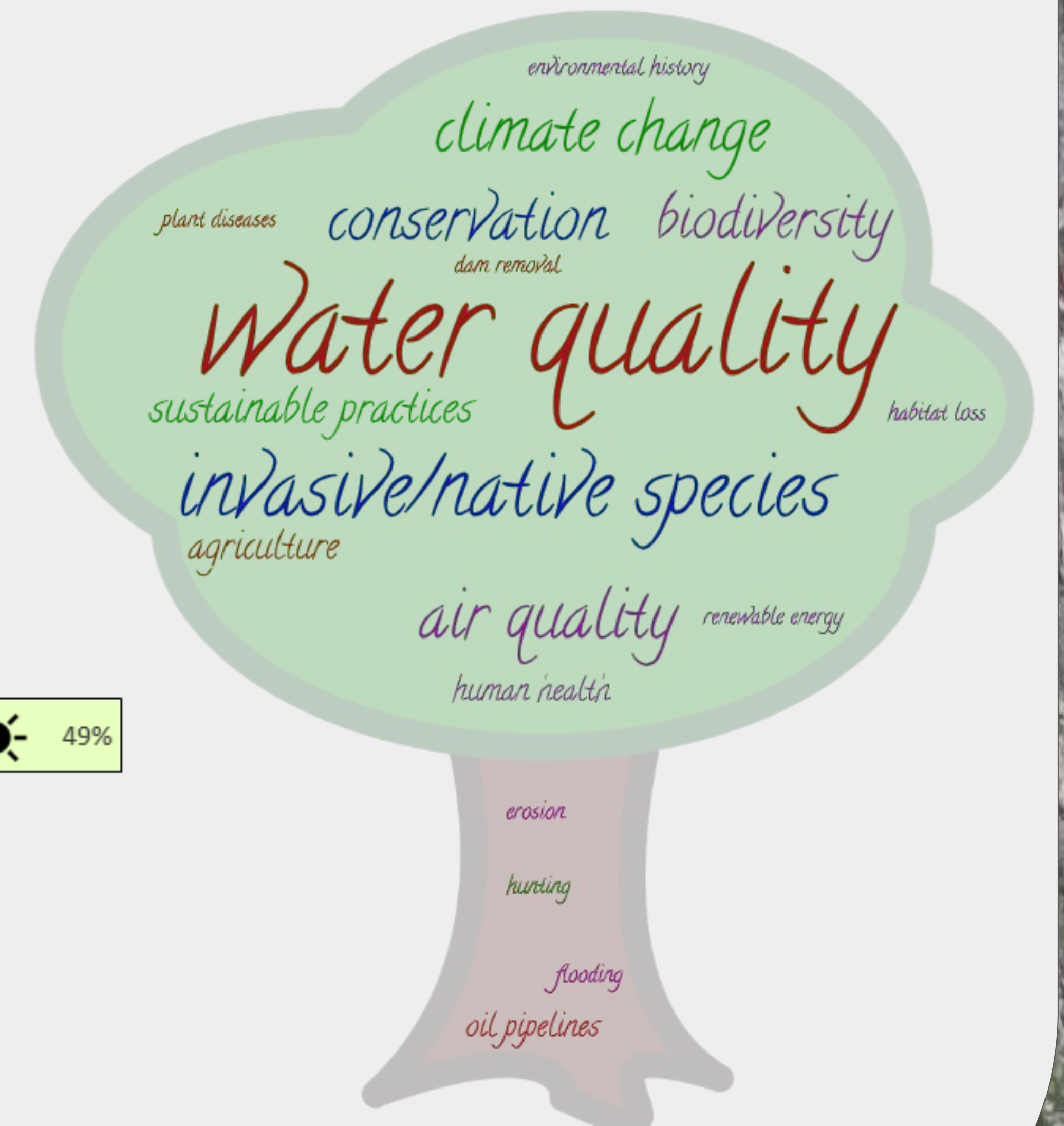


Location, # of survey responses and School Districts over Racial and Ethnic Diversity Index

### What do we want to learn about?



Top Science Concepts of Interest



Local Environmental Issues of Interest